

Town of Groveland Zoning

Livingston County

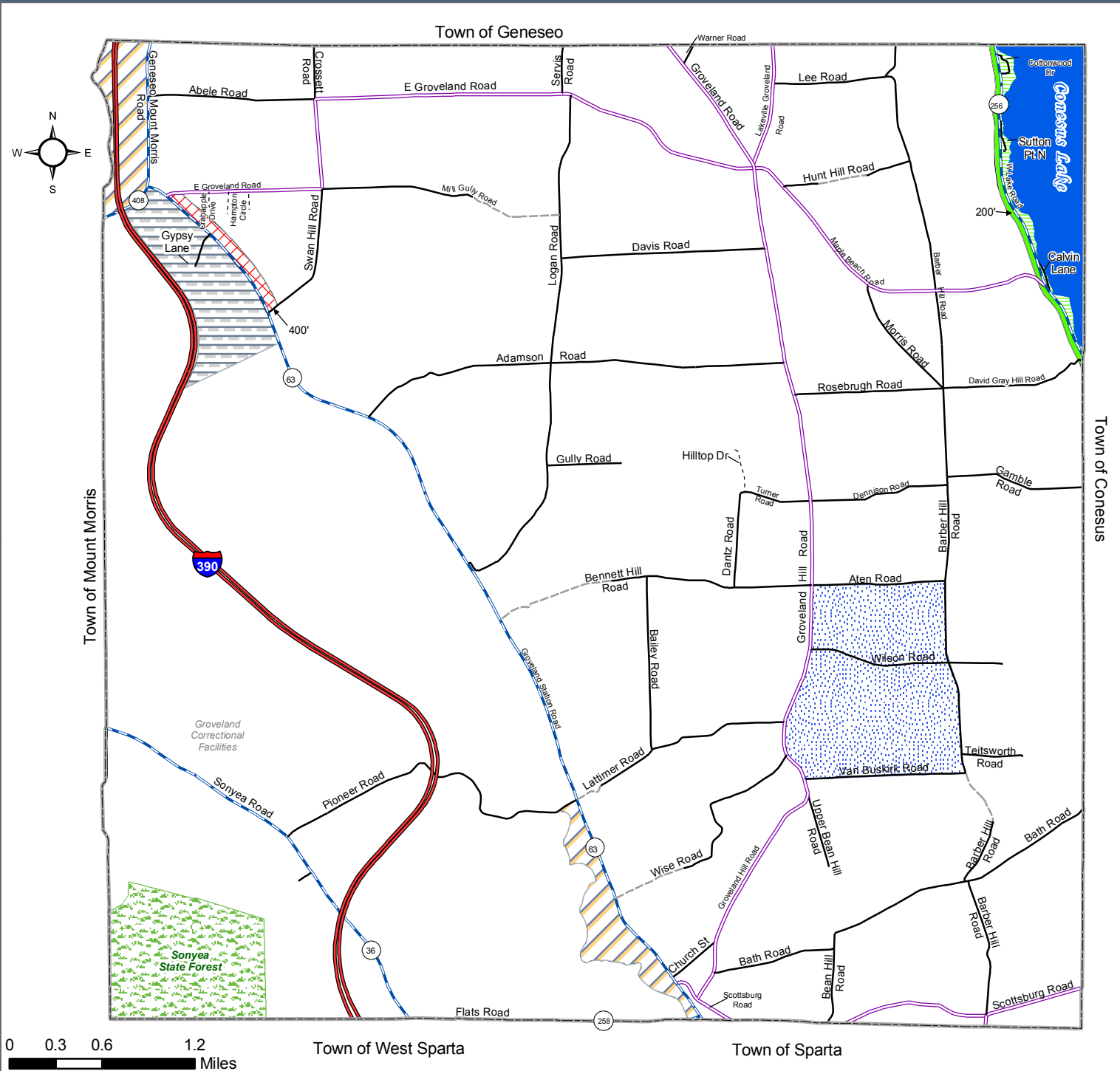


Legend

- Expressway
- State Highway
- County Highway
- Town Road
- Village Road
- Seasonal Road
- Private Road
- Lakes
- State Land
- Town Boundaries
- Ag-Light Industrial-Commercial
- Agricultural-Industrial
- Agricultural/Limited Business
- Agricultural/Residential
- Conesus Lake Residential
- Conesus Lake Shore Residential
- Watershed-Reservoir

Official Zoning Map Adopted January 14, 2010

Map created by the Livingston County
Planning Department: January 2010 (rev. 4/2010)



0 0.3 0.6 1.2
Miles